

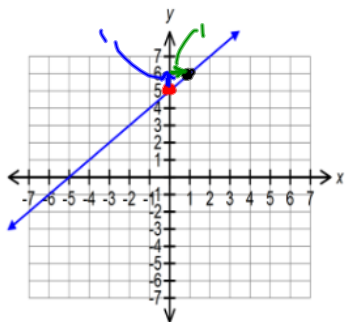
Name: _____

Remediation – Stating Equation of Diagonal Line ($y=mx+b$)

After you have watched the video from the wiki, you should try the following problems and then use the key to check your work. Also, you can check your answers on your calculator by entering your answer in the $y=$ window and comparing the graphs.

Directions: Please state the slope-intercept equation of the following lines.

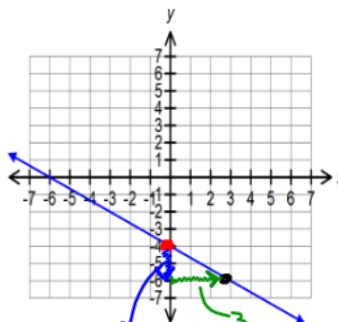
1. $y = x + 5$



$$m = \frac{1}{1} = 1$$

$$b = 5$$

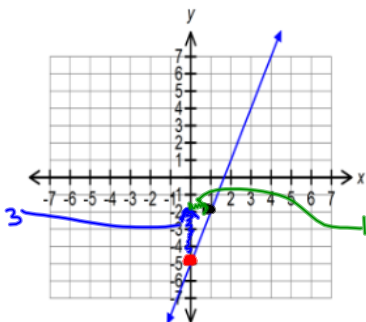
2. $y = -\frac{2}{3}x - 4$



$$m = \frac{-2}{3}$$

$$b = -4$$

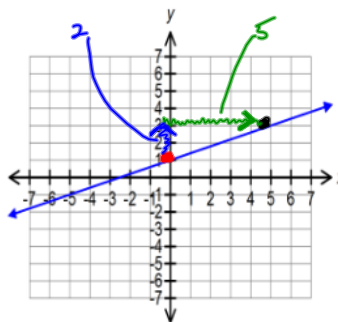
3. $y = 3x - 5$



$$m = \frac{3}{1} = 3$$

$$b = -5$$

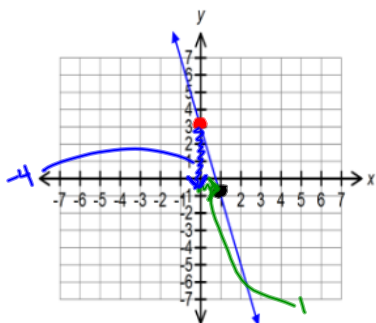
4. $y = \frac{2}{5}x + 1$



$$m = \frac{2}{5}$$

$$b = 1$$

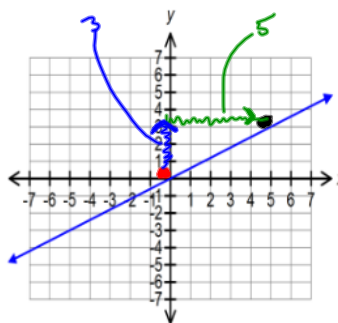
5. $y = -4x + 3$



$$m = \frac{-4}{1} = -4$$

$$b = 3$$

6. $y = \frac{3}{5}x$



$$m = \frac{3}{5}$$

$$b = 0$$